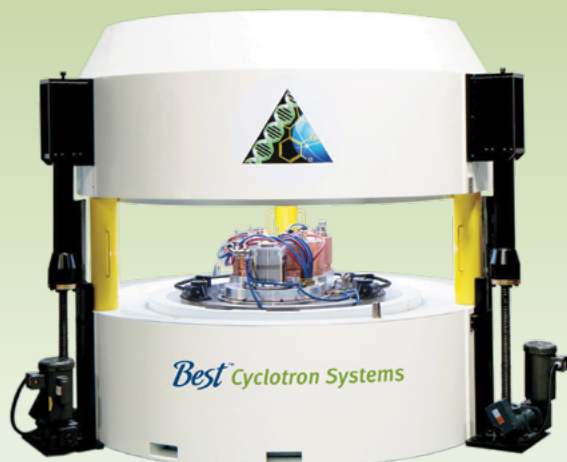
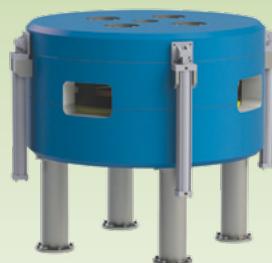


TURNKEY SOLUTIONS for radioisotope production in nuclear medicine

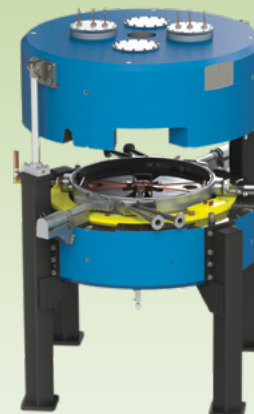


Best™ Model BG-95

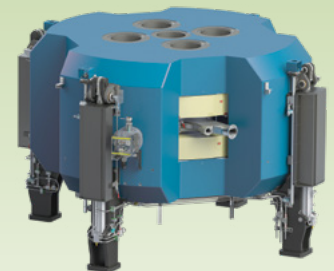
SUB-COMPACT SELF-SHIELDED CYCLOTRON FOR PRODUCTION OF: ^{18}F FDG, Na^{18}F , ^{18}F -MISO, ^{18}F FLT, ^{18}F -CHOLINE, ^{18}F -DOPA, ^{18}F -PSMA, ^{13}N AND ^{68}Ga



Best™ Model B25p
CYCLOTRON



Best™ Model 6-15 MeV
COMPACT HIGH CURRENT/VARIABLE ENERGY PROTON CYCLOTRON



Best™ Model B35ADP
ALPHA/DEUTERON/PROTON CYCLOTRON

Cyclotrons of Varying Energies

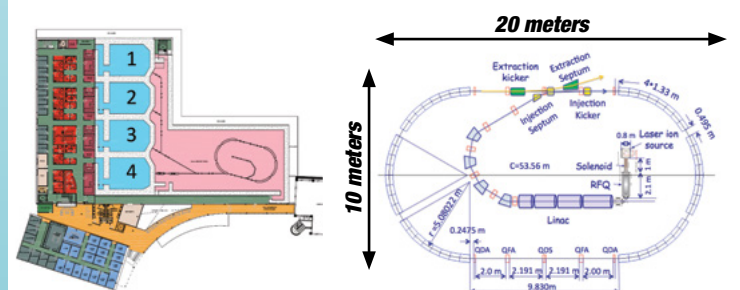
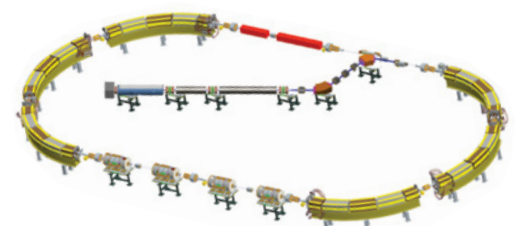
B100 CYCLOTRON	7.5 MeV	Capable of producing: ^{18}F FDG and Na^{18}F • Single or batch dose production • Integrated self-shielded cyclotron, chemistry module and FDG QC module • Complete production lab in a 5 x 5 meter area
BG-95 CYCLOTRON	1-9.5 MeV	Low energy, self-shielded compact system capable of producing: ^{18}F FDG, Na^{18}F , ^{18}F -MISO, ^{18}F FLT, ^{18}F -Choline, ^{18}F -DOPA, ^{18}F -PSMA, ^{13}N and ^{68}Ga
Best CYCLOTRONS	1–3 MeV	Deuterons for materials analysis*
	70–200 MeV	For Proton Therapy*
	3–90 MeV	High current proton beams for neutron production and delivery*
B6-15 CYCLOTRON	1–15 MeV	Proton only, capable of high current up to 1000 Micro Amps, for medical radioisotopes
B25 CYCLOTRON	20, 15–25 MeV	Proton only, capable of high current up to 1000 Micro Amps, for medical radioisotopes
B25u–35adp CYCLOTRON	25–35 MeV	Proton or alpha/deuteron/proton, capable of high current up to 1000 Micro Amps, for medical radioisotopes
B35 CYCLOTRON	35 MeV	Proton only system for medical radioisotopes production
B70/70adp CYCLOTRON	35–70 MeV	Proton only or alpha/deuteron/proton systems, capable of high current up to 1000 Micro Amps, for medical radioisotopes

*Some products are under development and not available for sale currently.

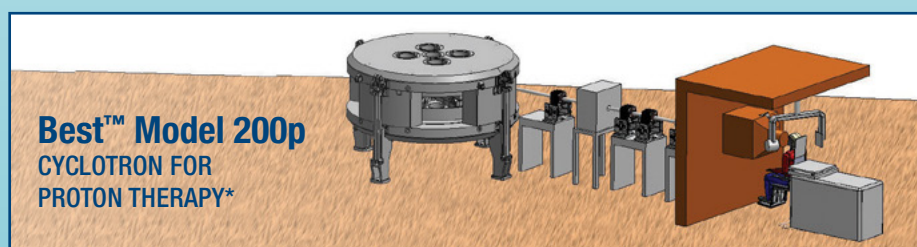


Ion Rapid Cycling Medical Synchrotron (IRCMS) 200–400 MeV Variable Energy for Proton to Carbon Heavy Ion Radiation Therapy

**Racetrack Synchrotron—
Smaller Area
Footprint**



TeamBest Global Companies ©2025



*Patent pending