

# Best<sup>®</sup> medical canada



Best Medical Canada 413 March Road Ottawa, Ontario K2K 0E4 Canada  
phone 613 591 2100 877 668 6636 fax 613 596 5243 www.bestmedical.ca

AFRICA | ASIA | EUROPE | LATIN AMERICA | MIDDLE EAST | NORTH AMERICA



# World Leader in MOSFET Dosimetry

## Patient Dose Verification Systems



### TN-RD-70-W mobileMOSFET System

- Advanced software allows for dose verification in comparison to target dose, and electronic dose reporting with data transfer to R&V systems
- Portability between multiple treatment rooms

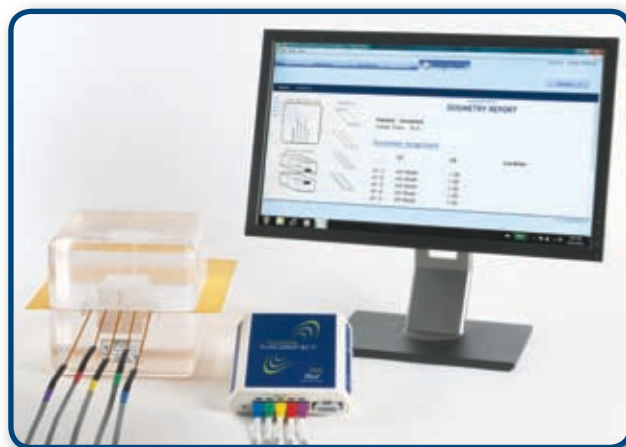


### TN-RD-90 Portable Dosimeter System

- Supports two MOSFET dosimeters
- Handheld, stand alone system
- No software or computer necessary

### TN-RD-52 XWU-IMRT Phantom

- Ideal for obtaining quantitative dose measurements for film and MOSFET dosimetry



## *D<sub>x</sub>*posure software

Software available for radiology applications:

D<sub>x</sub>posure software has been designed specifically for fluoroscopy, CT & Angiography. Prevents over-exposure and minimizes liability.

**Best** medical *canada*

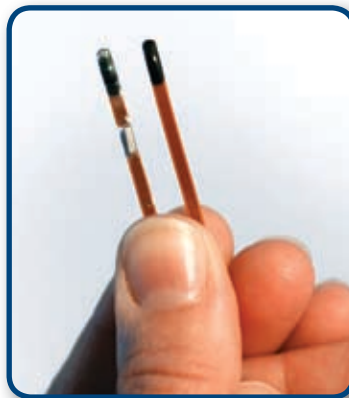
phone 613 591 2100 877 668 6636 [www.bestmedical.ca](http://www.bestmedical.ca)



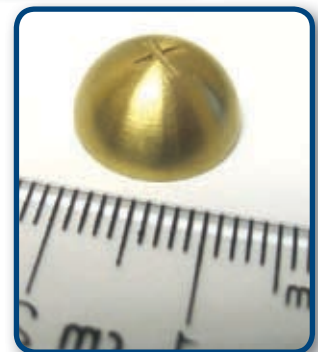
# MOSFET Dosimeters

MOSFET dosimeters are small, lightweight and rugged, which make them ideal for a variety of radiotherapy and radiology applications.

- All dosimeter models are available in standard & high sensitivity
- Wide range of hemispherical build-up caps for dosimeters available
- Smaller size (micro) and custom length (10 ft) also available
- Use for both electron and photon modalities
- Isotropic response for 360° gantry angles
- Dose rate and energy independent
- Waterproof, resistant to body fluids and liquid sterilization
- Compatible with all Best Medical Canada MOSFET Systems



**TN-502RD-HRO  
Dosimeter with  
Radiopaque Marker**



**TN-RD-56-0.63  
Brass Build-up Cap**

**Best<sup>®</sup> medical canada**

phone 613 591 2100 877 668 6636 [www.bestmedical.ca](http://www.bestmedical.ca)



# Best® Thermoplastics and Patient Immobilization

## Best Thermoplastics At-A-Glance



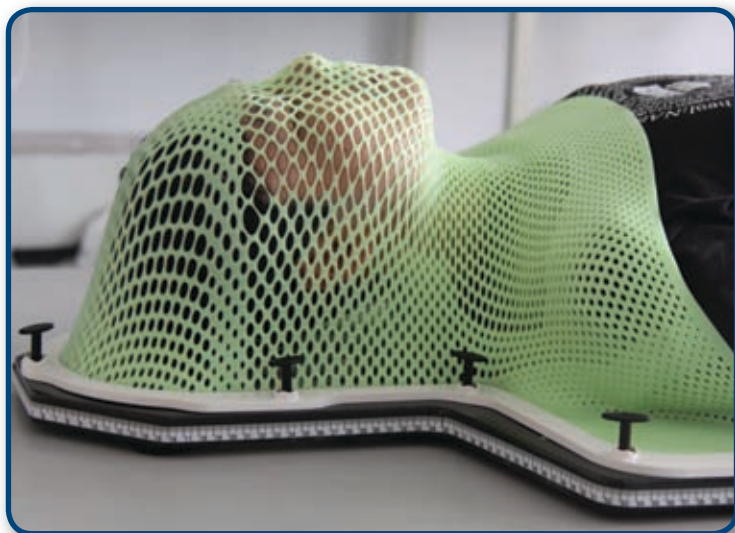
- Easily moldable
- Stronger
- Longer forming time
- Minimal shrinkage
- Non-stick



### How to Choose Best Thermoplastics

	Best White™	Best Green™
<b>Moldability</b>	Easy	Moderate
<b>Rigidity</b>	Normal	Highest
<b>Forming Time</b>	1.5 – 2 minutes	5 – 6 minutes
<b>Shrinkage</b>	9%	5%
<b>Non-Stick</b>	80%	98%

# Best<sup>®</sup> Green<sup>™</sup>



A major advance in thermoplastic design, Best Green answers our industry's need for masks with less shrinkage, stronger conforming and with zero tackiness. No more shims and spacers, masks form securely and comfortably without creating a "waffleface".



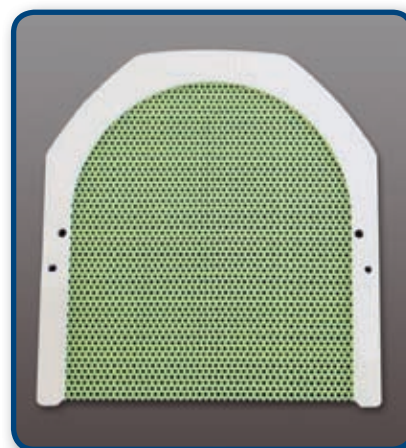
**Head & Shoulder S-Type**

Best Green won't stick to skin, hair or to itself... no more throwing out a faulty mask with edges stuck together. IMRT accuracy is enhanced with better fitting masks.



**Best AccuPerf<sup>™</sup>**

**U-Frame**



***Designed to fit all standard boards and baseplates including Civco, Klarity, Orfit, Qfix and others.***

**Best<sup>®</sup> medical** *canada*

phone 613 591 2100 877 668 6636 [www.bestmedical.ca](http://www.bestmedical.ca)



# U-Frame Thermoplastic Masks

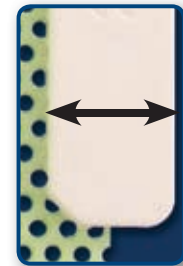
## Best Elite

Narrow Frame  
Stronger Thermoplastic Our Finest  
U-Frame Mask

- Wider facial area than all other U-frame masks
- Narrower frame than all other U-frame masks
- Ultra-strong Best Green thermoplastic
- Reinforced frame does not wiggle or warp



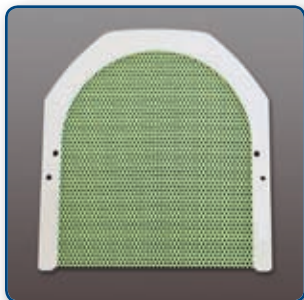
Strengthened frame



Narrower (20 mm)

## Wide Face Masks

Wider thermoplastic area than all other  
U-frame masks (215 mm)



RG420E  
RG430E



RG421E  
RG431E

Designed to fit all standard U-frame baseplates from Best, Civco,  
Klarity, Qfix and others.

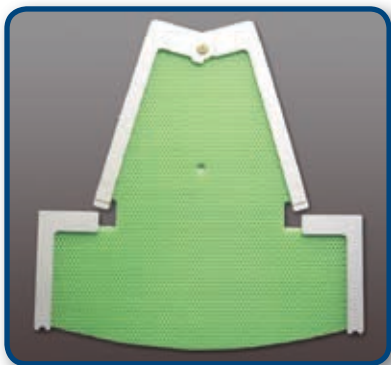
Best<sup>®</sup> medical *canada*

phone 613 591 2100 877 668 6636 [www.bestmedical.ca](http://www.bestmedical.ca)



# Other Thermoplastic Masks

## Elekta-Compatible Masks



**RG-ELS-2022**  
Compatible  
with Elekta  
Immobilization  
System



**RG-ELH-2022**  
Compatible with Elekta  
Immobilization System



**R420N**  
Pediatric  
U-Frame Masks

R471

**R-UC**  
Wing Frame  
Masks



R-UC1

R471

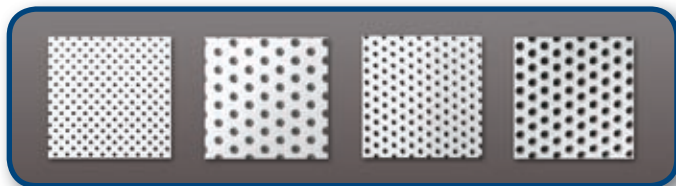


Masks for  
Civco Reloadable  
S-Type Frame



R470

## Thermoplastic Sheets



15%

22%

36%

42%

ID	Reloadable Masks	PKG
R471S	3.2 mm Head & Shoulder Mask	4/CS
R470S	2.4 mm Head & Shoulder Mask	4/CS
R471SH	3.2 mm Head Mask	12/CS
R470SH	2.4 mm Head Mask	12/CS

**Best<sup>®</sup> medical canada**

phone 613 591 2100 877 668 6636 www.bestmedical.ca



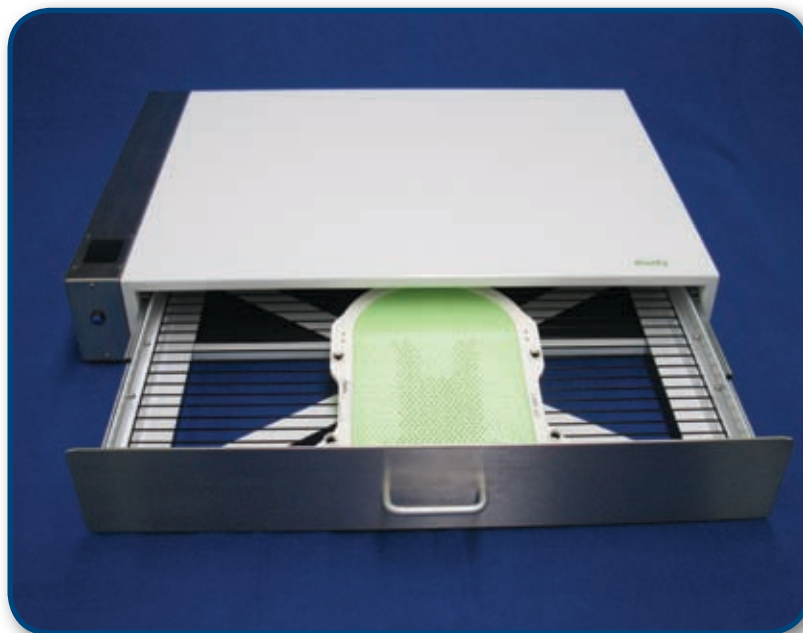
# Heating Options for Thermoplastics

## Klarity Warming Oven

The Klarity Oven softens thermoplastic material for radiation therapy to its optimum elasticity with safe, dry heat. It eliminates liquid hazards and ensures maximum comfort during application to the patient.

The insulated case and space-saving, compact design are perfect, even for the most crowded department.

- Easy-sliding drawer opens fully to provide maximum access to the material
- Non-stick surface
- Insulated case
- Dry heating eliminates the inconvenience of using water
- Digital temperature setting in Celsius or Fahrenheit
- Auto shut-down after 2 hours — turns off after 6 hours
- 3" touch display for temperature adjustment
- Heat circulation, convection principal



Digital dry heat temperature control



Reliable softening of thermoplastic material

### Finish:

White baked enamel (on cold rolled steel), stainless steel trim

- Outside dimensions: 79 cm x 58 cm x 13 cm
- Weight: approximately 21 kg

### Electrical:

- KPS-1240: 230 V, 50-60 Hz, 1350 W
- KPS-1120: 115 V, 50-60 Hz, 1350 W

**Best**<sup>®</sup> medical *canada*

phone 613 591 2100 877 668 6636 [www.bestmedical.ca](http://www.bestmedical.ca)



# TRU™ Moldable Head Cushions



## A superior method for head immobilization

Simple to use, TRU™ cushions allow you to create a custom head support for each patient.

- Provide accurate reproducibility while keeping the patient comfortable
- Designed for use with or without a thermoplastic mask
- Can be reheated and reformed as often as needed
- Not water-activated
- Simply heat to 150° F

*Patent Pending*



- Forms easily and quickly
- Extremely comfortable
- Strong and secure
- No odor

**Best**® *medical* **canada**

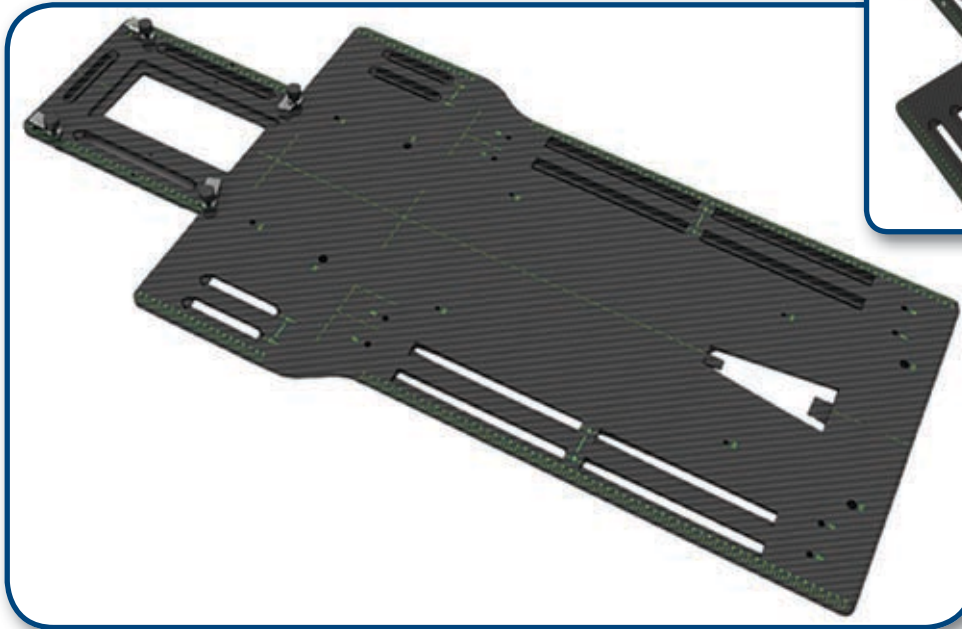
phone 613 591 2100 877 668 6636 [www.bestmedical.ca](http://www.bestmedical.ca)



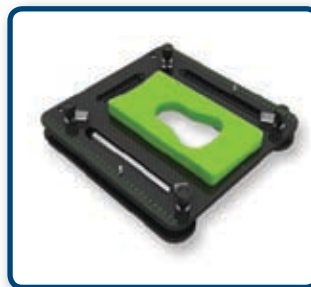
# Baseplate Systems

## MultiFix™ All-In-One System

One baseplate for multiple treatment options



## MultiFix™ Head Options



- Quick & simple setup
- Indexable
- For both U-Frame & Orfit-Type head masks

Options for prone and lateral treatments

**Best**® medical *canada*

phone 613 591 2100 877 668 6636 [www.bestmedical.ca](http://www.bestmedical.ca)



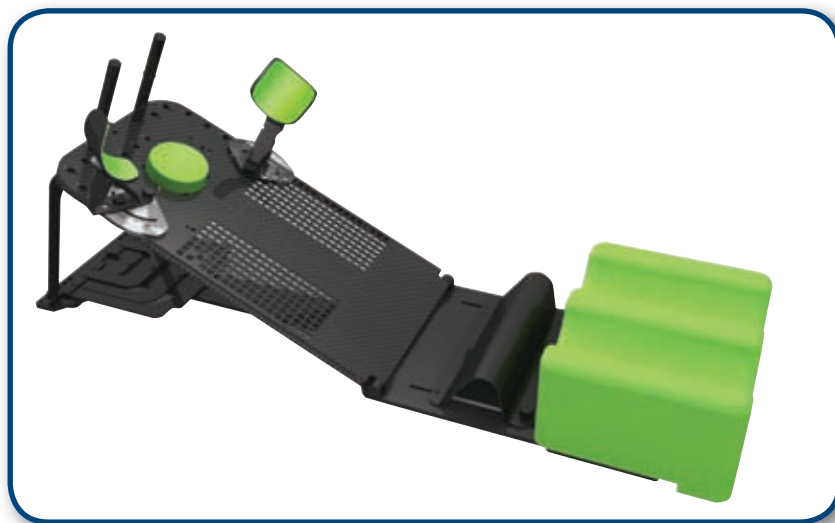
# Superior Carbon Fibre Construction

## Optek™ S-Type Overlay



- CT compatible
- Maximum width of 61 cm
- Premium carbon fibre composition

## Best Breastboard System



Includes:

- Arm supports
- Wrist cups & vertical hand grips
- Head cushion
- Leg cushion